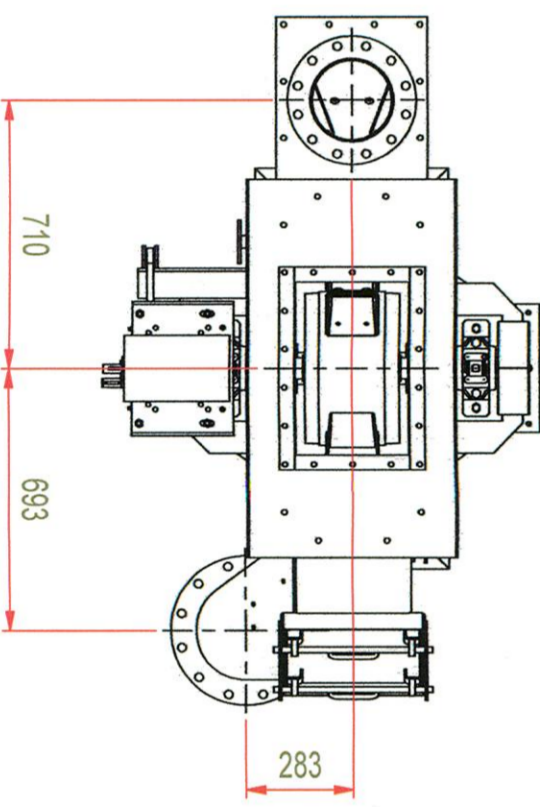
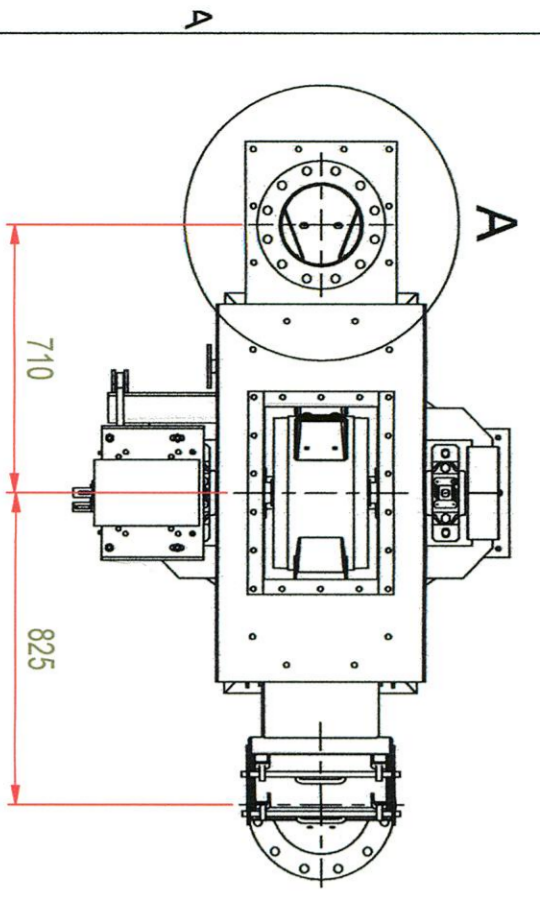


Aantal: 2x

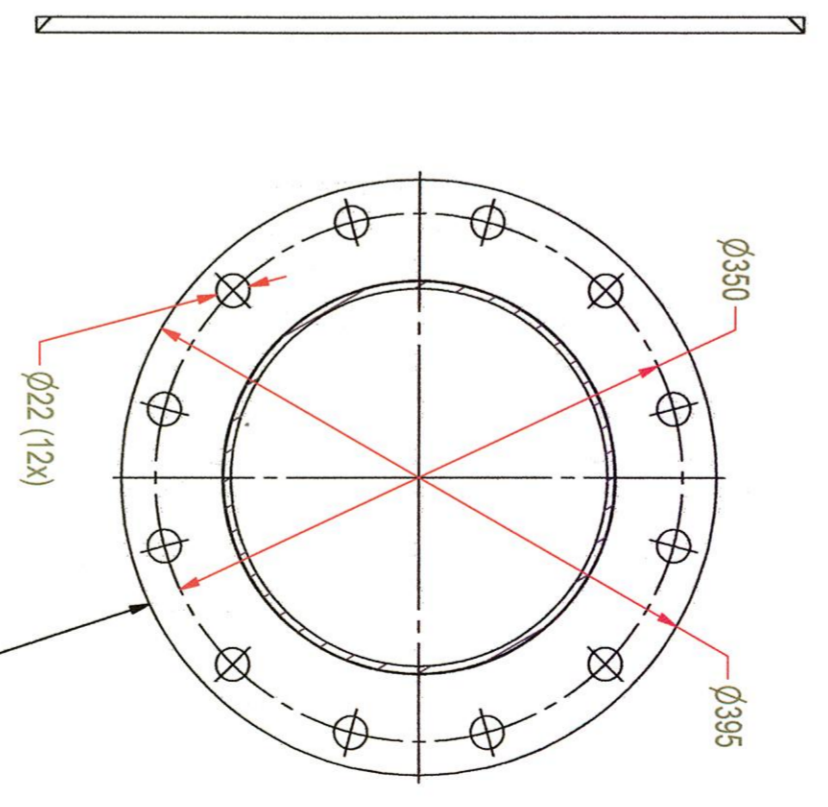
Aantal: 1x



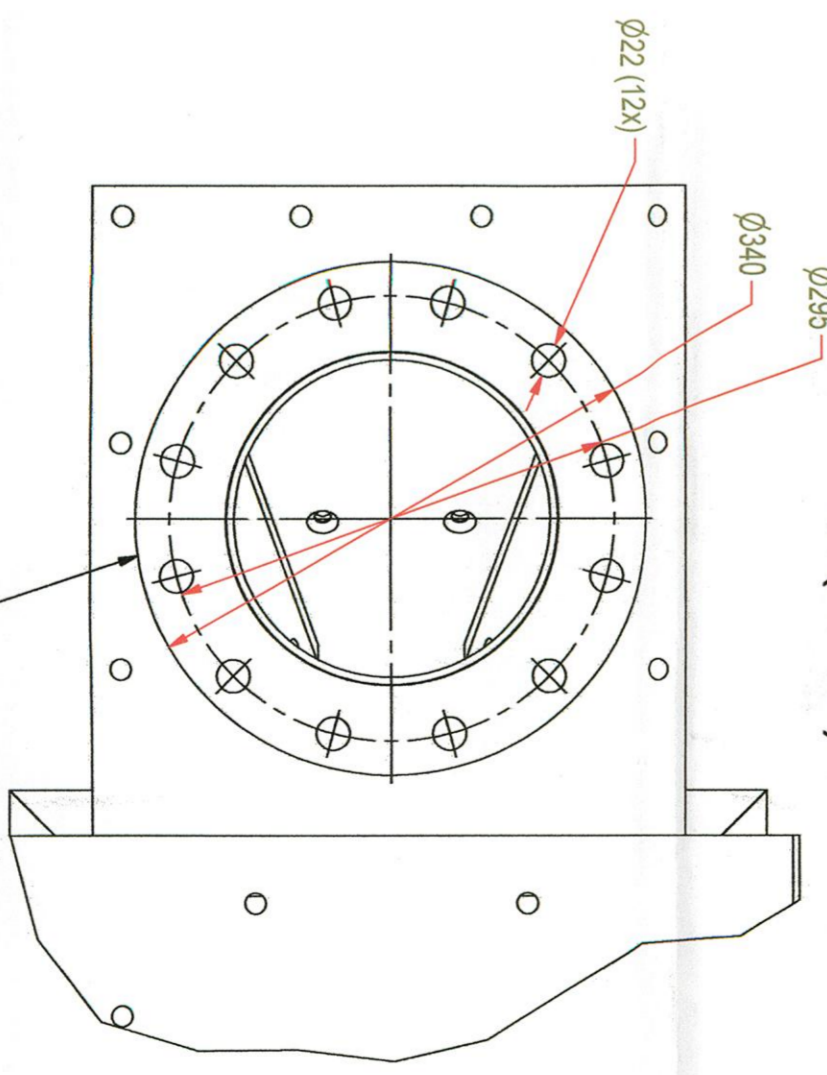
Motor Nord SK90L/4 - 1,5 kW - 1395 t/min
 230/400 - 50 Hz - IP66 - Isol.K.F. - bouwvorm B3
 uitgaande as $\varnothing 24$ - lengte 50 mm
 nominale stroom 3,55 A

Omsluitkast (via) Benzlers Tairton type J22A met
 techielem - I=15,221 - ingaande as 19 mm

B-B (1:5)



A (1:5)



Waterleau & Biotim Elevator 94.4-BE-1A/B/C

BioSolidAir Assembly

THIS DRAWING AND DESIGN ARE THE EXCLUSIVE PROPERTY OF MOTOGROUP BVB4 AND MAY NOT BE COMMUNICATED, DISCLOSED OR COPIED EXCEPT AS AUTHORIZED BY THIS COMPANY.

DATE: 10/05/2006	DRAWN BY: DDS	REVISION	A	B	C	D	E
SCALE: 1/20	BORDER: A1	DRWG. NR.: 2006.0171-22					